

NEWARK & NOTTINGHAMSHIRE AGRICULTURAL SOCIETY

SOCIETY MATTERS



**WELCOME TO
OUR
SOCIETY
NEWSLETTER**



Issue No: 3

April 2021



**MESSAGE FROM
PROFESSOR EDWARD PECK
SOCIETY PRESIDENT**

Hopefully we are now on a route taking us back to the regular cycle of Society events, including the shows scheduled for later in 2021.



**NNAS AGRICULTURAL
EDUCATION GRANT
HELPING YOUNG FARMERS**

Emily Boby is extremely grateful for the support from NNAS. Emily has now successfully completed her PA1 and PA6 pesticide spraying courses.



WELCOME TO THE SPRING EDITION OF SOCIETY MATTERS

Our new newsletter aimed at highlighting the activities of the Agricultural Society, issues affecting agriculture and our related charitable purposes.

As we move into Spring and the start of a new season, I hope this newsletter finds you all safe and well. The milder weather (*if you ignore the few recent snow flurries!*), lighter nights and new growth in our fields and gardens have raised many spirits, as has the successful roll out of the vaccination programme and the steady progress out of the pandemic restrictions.

The Roadmap out of lockdown has reached Stage 2, and with this ability to operate retail and personal services and to meet and gather with COVID secure arrangements, the opportunities for activity at the Showground have also begun to move apace.



We are working closely with the relevant teams at the County and District Councils as well as other agencies and, of course, our customers, to ensure events are able to operate safely and successfully. I am very pleased to say bookings are beginning to confirm at a steady rate.

Positively, we have now formally confirmed that both the Vintage Tractor & Heritage Show and the Midlands Machinery Show will definitely be going ahead in November and there is a definite buzz from all of those involved. Additionally, I am delighted to report that both our current President, Professor Edward Peck and Deputy President, Mr Pat White, have agreed to stand for a third term in 2022 and their support will be much appreciated.

Simon Eccleston (CEO)

PROFESSOR EDWARD PECK – 2021 A POSITIVE ROUTE FORWARD

Hello again, from the longest serving President the Society is ever likely to have! Hopefully we are now on a route that will take us back to the regular cycle of Society events, including the shows scheduled for later in 2021.

Given the unusual circumstances of the past year, life on our Brackenhurst campus has been surprisingly busy. The campus re-opened to students in September 2020 and our first undergraduate agriculture students joined the community of over 1,700 students that study there. Students enjoyed a blend of online and in-person teaching in Term 1 and, despite the national lockdown since January, our facilities remained open to support Further Education students.

Life on the farm has continued unabated throughout the pandemic, as it has done everywhere else. Since March students have been lambing and calving, synchronizing our Lincoln Red heifers, and carrying out the groundwork for seed drilling.

The Brackenhurst campus continues to develop. In October, the stunning new Lyth Building opened, which houses state-of-the-art teaching facilities, a 200-seat auditorium, exhibition space and a new refectory. We had not expected one of its first uses would be as a COVID-19 testing facility, but Brackenhurst has always been flexible, serving as a military recuperation centre during World War I. Post-COVID-19, we hope the Lyth Building will become a regional hub for agricultural, rural and environmental sciences and we look forward to showing you round as soon as we can.

Professor Edward Peck (President)

A NOD TO NOVEMBER

The good news is the NNAS remains committed to supporting the agricultural community in Nottinghamshire and beyond and still plans to hold its annual Midlands Machinery Show 9th to 10th November and Newark Vintage Tractor & Heritage Show 13th to 14th November at the Showground.

Work has started on planning both events and we will be announcing the opening of bookings and entries for both shows shortly.

The 2021 themes and features for the Newark Vintage Tractor & Heritage Show include a large number of anniversaries including:

- 60 Years of David Brown 990
- 50 Years of Ford 7000
- 75 Years of Fordson E27N (*Carried over from 2020*)
- 75 Years of Grey Fergie (TE20)

We are very much looking forward to a busy November and seeing you all again at the Showground.



CANCELLATION OF NOTTINGHAMSHIRE COUNTY SHOW – 8TH MAY 2021

It was with bitter disappointment we have had to cancel the County Show for the second year running.

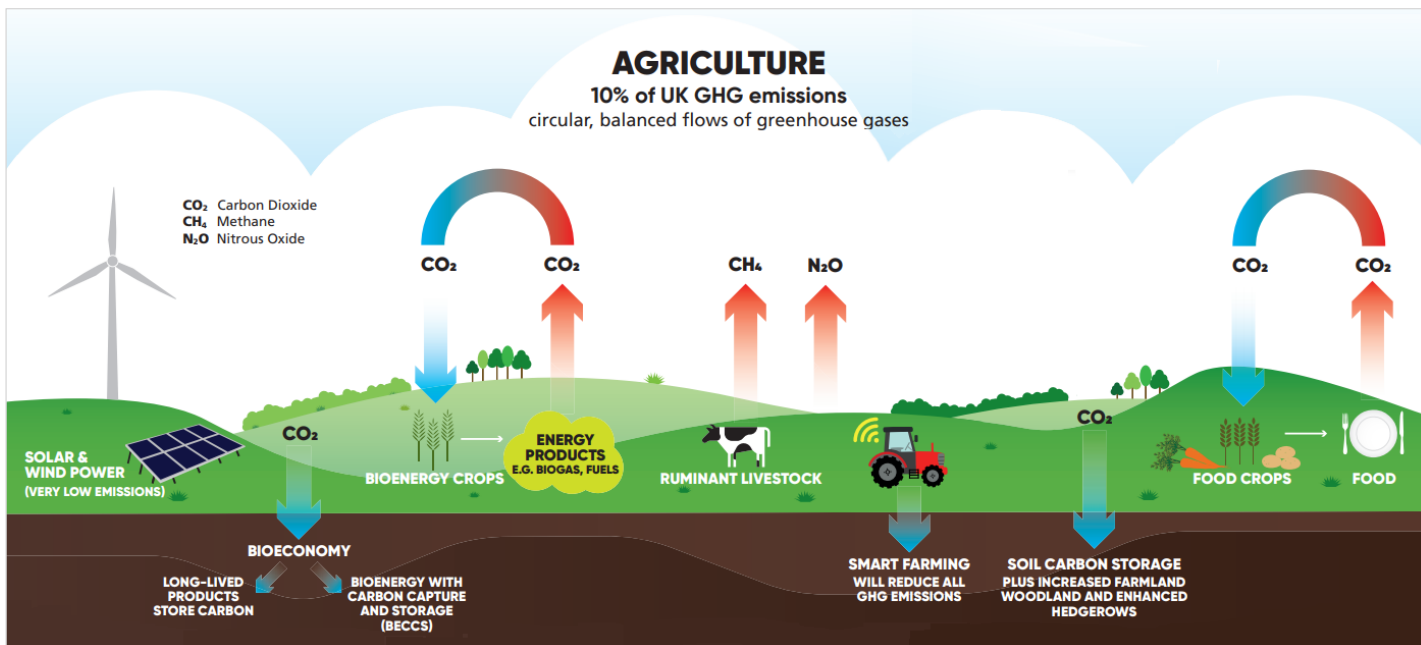
The difficult decision had been taken following the release of the Government's Covid 19 Spring Response and Road Map, where clarity had been received on the re-opening of the country from lockdown. Despite all the encouraging signs of recovery and the roll out of vaccine programme, the timings were very fluid and unfortunately the County Show date fell within Steps 2 and 3, meaning the show would not be practical or permissible at this stage within the Road Map.

The Nottinghamshire County Show is the highlight in the Society's events calendar. It is incredibly disappointing, not only for the team who have been working so hard to plan the 2021 Show with a changed one-day format, focusing on livestock and equine competitions, but also disappointing for all our valued participants, volunteers, exhibitors, sponsors and partners who make the show the success it is.

Thank you for your continued support and understanding and we look forward to welcoming you back to the Nottinghamshire County Show in May 2022 with an exciting new format.

*Elizabeth Halsall
(Events, Shows & Development Manager)*





NET ZERO

WHAT DOES THIS MEAN FOR FARMING?

The NFU have set the ambitious goal of reaching Net Zero greenhouse gas (GHG) emissions across the whole of agriculture in England and Wales by 2040, contributing to the UK's own ambition to reach Net Zero by 2050.

A gross-zero target would mean reducing all emissions to zero. This is not realistic, so instead the net-zero target recognises there will be some emissions, but that these need to be fully offset, predominantly through natural carbon sinks such as oceans and forests. Research is currently ongoing to increase carbon capture using artificial carbon sinks in the future, which is where farm land could potentially be used.

UK agriculture can make an important contribution to building a zero-carbon economy for Britain. The NFU recognise we must set out how this can be best achieved, alongside the many other expectations on farmers and growers; and this will require a portfolio of different policies and practices focused on three key themes, or pillars:

PILLAR 1 - Boosting Productivity and Reducing Emissions

Improving farming's productive efficiency will enable farmers to produce the same quantity of food, or more, with less inputs, in smarter ways. This in turn will enable the sector to reduce its greenhouse gas emissions.

PILLAR 2 - Farmland Carbon Storage

Farming is already responsible for a critical carbon resource in soils, wooded landscape and semi-natural habitats. The achievement of Net Zero should actively incentivise the conservation of this carbon resource, as well as its enhancement.

Conservation and enhancement can be achieved through improving land management, changing land use to capture more carbon by the provision of bigger hedgerows, more woodland and especially more carbon-rich soils.

PILLAR 3 - Coupling Bioenergy to Carbon Capture, Utilisation and Storage

A key part of the NFU ambition for achieving Net Zero is boosting renewable energy and the bioeconomy, to displace greenhouse gas emissions from fossil fuels and GHG removal through photosynthesis and carbon capture.

PARTNERSHIP WORKING WITH GOVERNMENT – WITH INDUSTRY – WITH ACADEMICS

The policy measures needed to enable UK farming to meet our Net Zero aspiration will require a partnership approach. Uptake by farm businesses will need to be accompanied by support across government departments, agencies and other stakeholders, to deliver on this ambition. Working together as an industry across all farming sectors and choosing from a broad range of policy measures will enable individual farm businesses to take action on Net Zero.

RABI

HELPING FARMING PEOPLE

The Royal Agricultural Benevolent Institution is farming's oldest and largest charity, serving the farming community since 1860.

A lot of people don't understand who farmers are or what they do. Extreme weather, illness, accidents, animal disease, family breakdown, bereavement and now COVID19 are some of the reasons why people turn to RABI.

Problems can easily spiral out of control. Sometimes, all it takes is a small amount of support at the right time to get things back on track.

WHAT CAN RABI DO FOR YOU?

- **Working Families** - There are lots of reasons why, through no fault of your own, you might need some short-term financial help. RABI can help clear rent / mortgage arrears, domestic bills and buy essential white goods.
- **Elderly or Unable to Work** - As well as providing regular grants and help with things like fuel costs, RABI can also help with the cost of replacing essential household items and pay for specialist equipment such as stairlifts and mobility scooters.
- **Training Grants** - RABI provide grants to help you develop existing skills so you can earn extra money off-farm and remain in farming. This scheme is for established farmers on low incomes and with limited savings. Farmworkers who have been made redundant or can no longer work due to illness or disability may also be eligible.

“

CONFIDENTIAL SUPPORT

FREEPHONE HELPLINE

0808 281 9490

OR EMAIL HELP@RABI.ORG.UK

”



WELL BEING SUPPORT AND COUNSELLING SERVICE

Farming has a unique set of pressures, with farmers being more likely to suffer from depression caused by financial pressures and isolation. Statistics show more than one farmworker takes their own life every three weeks across the country!

Poor mental health remains one of the biggest challenges affecting those working in UK agriculture, but with early detection you can recover, so it's important to remain connected and look out for your friends and family members.

RABI is partnering with Kooth PLC to provide a new online mental wellbeing service for people in the farming community. This new RABI tailored service offers emotional support and is accessible online. Two platforms are available, Kooth, for young people aged 11 to 17 and Qwell, for anyone aged 18+.

For 15 years, Kooth PLC have been the UK's leading provider to the NHS in online mental health support. Their team of experienced counsellors create a safe environment and offer an integrated approach to positive mental health. Kooth and Qwell's counsellors understand the unique issues and difficulties the farming industry faces. They have training in different counselling approaches and are BACP (*British Association for Counselling and Psychotherapy*) accredited, allowing them to meet individual needs and preferences.

Counsellors are available from 12pm-10pm Monday to Friday and from 6pm-10pm at weekends. Drop-in and pre-booked sessions are available.

WHAT PEOPLE ARE SAYING

"It's reassuring to know there is a safe place for farmers to visit. Anyone struggling with wellbeing issues will find a supportive community – so you need never feel alone."

Kate Davies, Wale YFC Chairman

"Speaking from personal experience there's a lot to be gained from seeking help from professionals who understand the way you feel."

Roger Kerr, Chief Executive OF&G



EMILY BOBY

EDUCATION GRANT SUCCESS!

Emily Bobby is very grateful to NNAS for her Education Development Grant of £500.

Emily is presently studying for a FdSc in agriculture at Bishop Burton University Centre, after successfully achieving a Level 3 Diploma in agriculture at Brackenhurst College. Emily currently works with dairy and sheep, and has a small flock of her own, which she is hoping to expand. In the future, Emily would like to become a shepherd.

“The NNAS grant has allowed me to complete both my PA1 and PA6 pesticide spraying courses which will be highly beneficial in my future profession”, says Emily.

“I really enjoyed the training provided by the courses and I am looking forward to using my new skills.

I can now use pesticides safely and effectively while working. This will be useful to spray any weeds on grassland or even to spray unwanted weeds, which grow up and short the electric fencing for the sheep. I will be able to use the skills I have learnt for the rest of my career in farming.

The grant from NNAS has given me many more opportunities in the future. For example, having my Pesticide qualifications will help me be more employable and show that I am safe to handle pesticides to future employers.

The NNAS have been highly supportive throughout my training and I believe the educational grant would be beneficial to anyone studying in the same industry. I am extremely grateful to be offered this opportunity from the NNAS and I am thankful for the help and support they have given me!”

We are delighted to help Emily on the way to achieving her ambitions and wish her all the best in her career.

Further information about how to apply for the Education Development Grant, together with an application form and criteria can be found in the Farming Careers section on our dedicated education website.



<https://chalktofork.org>

EDUCATION DEVELOPMENT GRANTS HELPING OUR YOUNG FARMERS

The NNAS Agricultural Education Development Grant is given in support of our charity's objectives, which are to promote primary agriculture and related industries.

The maximum grant value is £500 per applicant and helps towards the cost of training and short courses for PA1 & PA2 Sprayer, Telehandler and Tractor Driving tests, etc. to help further the education and career for young people starting out in agriculture.

Priority is given to those who have not yet had the opportunity to accumulate savings or are in need of financial support.

Applicants must be on or seeking to attend an approved course or activity directly related to our charity's objectives, and also be a current, paid up member of our Society, or any Nottinghamshire Young Farmers Club.

If you would like to make a contribution to our Education Development Grant Fund your donation will go a long way towards helping us to fulfil our charitable aims and ensure future generations of young farmers receive a helping hand. They are our future!



Improvements to Roadway to Facilitate Vaccination Centre

VACCINATIONS A NEW ROAD TO RECOVERY

The Showground has featured prominently with a number of its buildings being used as a vaccination centre since January and we are really pleased to be able to support the programme and in particular the NHS and volunteers who are running the centre.

The centre is hoping to effectively double the number of vaccinations it can deliver as second doses are also rolled out, but to achieve this we have had to undertake some very rapid alterations to our facilities to allow safe and efficient movement around the area for attendees.

We are extremely grateful for the rapid response and support of a number of our suppliers in delivering these improvements and special thanks go to F. W. Pammenter & Son and to neighbours Wirtgen Ltd. for their help delivering urgent improvements to roads and pathways.

Thanks, must also go to a number of our customers, most particularly the International Antiques & Collectors' Markets, who have willingly reconfigured their event layouts in order to allow the NHS to continue using the facilities without interruption.

Simon Eccleston (CEO)

EVENTS FOR YOUR DIARY

- 12th Apr – 14th May Family
Nightflix Drive-In Cinema
- 15th Apr – 16th Apr Antiques Markets
Newark International Antiques &
Collectors Market
- 18th Apr | 9:00am Specialist
The Newark Arms, Armour, Medal &
Militaria Fair
- 20th Apr | 11:00am Specialist
NHS Blood Donation
- 26th Apr | 8:00am Antiques Markets
Runaway Monday
- 1st May | 11:00am Family
Horrible Histories' Barmy Britain –
Live On Stage!
- 1st May | 2:00pm Family
David Walliams' Billionaire Boy – Live
On Stage!



NEWARK AND NOTTINGHAMSHIRE AGRICULTURAL SOCIETY

NEWARK SHOWGROUND
01636 705796
office@newarkshowground.com
www.newarkshowground.com



STAFF NEWS

We are delighted to announce Rebecca Knight will be taking up a new role in the Show team as Competition and Membership Officer. Many of you will know Rebecca from her previous role as Trade Stand and Membership Co-ordinator. Rebecca is moving across to replace Harriet Aram who has sadly left the team. We would like to thank and recognise Harriet's hard work and enthusiasm for both the County Show and Newark Vintage Tractor & Heritage Show.

Rebecca has a wealth of experience and knowledge in the Competition arena especially Light Horse and Pony showing with strong connections and successes in the Welsh Pony and Cob Society. Rebecca is looking at how we can develop the classes across our shows to ensure we have up to date and relevant competitions within our Livestock and Equine sections, whilst continuing her work with Membership.

Rebecca's move across from Trade Stands means that we have a vacancy for a sales focused role for Trade Stands and Sponsorship across our three Shows. Full details of this vacancy will be on the NCS and Newark Showground websites shortly.

Kay Gugliotta, our Education Officer is also moving on to pastures new and taking up a full-time role at the Canal and River Trust. Kay has worked for the Society for three and half years to develop our agricultural educational messages and promote the Society to wider audiences, including schools, higher education, local community groups and regional businesses. We wish Kay success and luck in her new role.

*Elizabeth Halsall
(Events, Shows & Development Manager)*